



64121

**OBIKA LEATHER+**

**Tipologia:** similpelle  
**Composizione:** 66% poliuretano, 24% poliestere, 10% cotone  
**Larghezza:** 140 cm  
**Peso:** 1000 g/mtl  
**Design:** Inger Mosholt Nielsen / Helene Jensen  
**Pulizia e manutenzione:** contattare il fornitore al sito [www.gabriel.dk](http://www.gabriel.dk).

**Type:** Faux leather  
**Composition:** 66% polyurethane, 24% polyester, 10% cotton  
**Width:** 140 cm  
**Weight:** 1000 g/lm  
**Design:** Inger Mosholt Nielsen / Helene Jensen  
**Cleaning and maintenance:** contact the supplier through website [www.gabriel.dk](http://www.gabriel.dk).



60000



61177



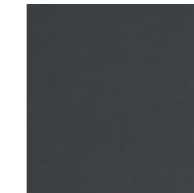
61178



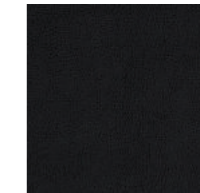
61179



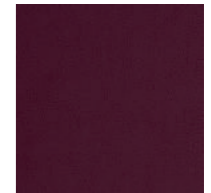
60160



60161



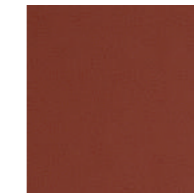
60999



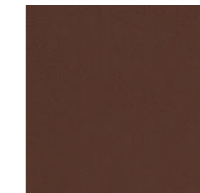
64122



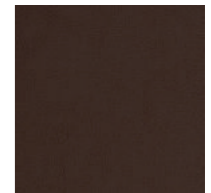
61181



63059



63060



61182

**Resistenza al fuoco / Flame resistance**

EN 1021-1/2  
 BS 5852 (O,1-5)  
 CA TB 117-2013  
 BS 7176  
 DIN 4102 B1  
 NFP 92-503/504/505 M1  
 ÖNORM B1/Q1  
 UNI 9175 1IM  
 FAR/JAR 25.853 (a) (i) (ii)

**Solidità alla luce / Light fastness**

UNI EN ISO 105-B02 (5-7)

**Resistenza all'abrasione / Abrasion resistance**

UNI EN ISO 12947-2 (≈ 250.000 Martindale)

**Solidità allo sfregamento / Fastness to rubbing**

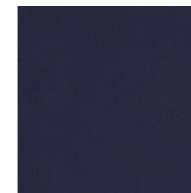
UNI EN ISO 105-X12 (a secco/dry rubbing 4-5)  
 UNI EN ISO 105-X12 (a umido/wet rubbing 4-5)

**Note**

Leggere differenze di colore fra una partita e l'altra sono da considerarsi normali

**Notes**

Light colour differences between lots must be considered normal



66138



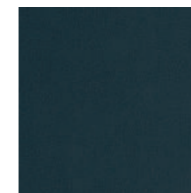
67050



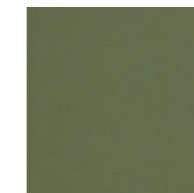
67049



66139



67051



68105

**Gabriel®**

For further information  
[gabriel.dk](http://gabriel.dk)